

# Dinstar SIMCloud & SIMBank

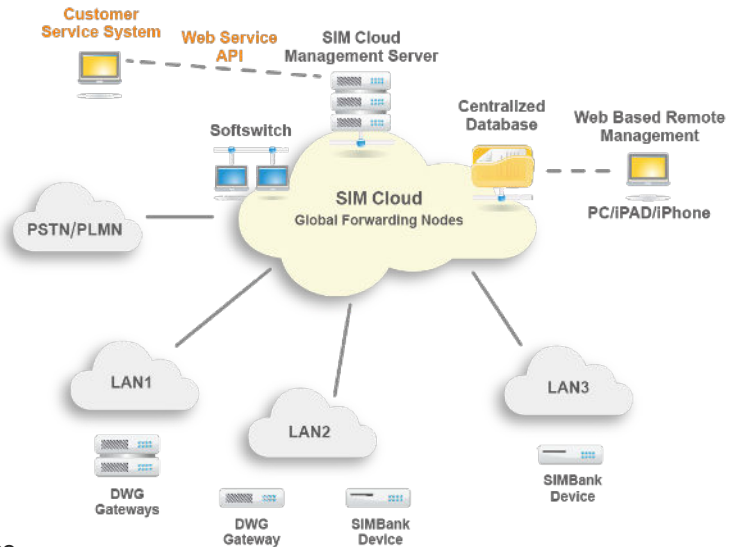
## SIMCloud

SIM Cloud is centralized SIM card management system which is based on the newest cloud communication technologies. Ready-To-Deploy, customer needn't setup extra hardware server, and easy to start with SIM Cloud. SIM Cloud provides device management, SIM card management, human behavior simulation, real-time statistics and Open Web-Service API.

## Key Features

- Ready-To-Deploy SIM Cloud
- Commercial Database, Mass Storage and High Security
- Global Forwarding Nodes
- Bandwidth Compression and Signal/Media Encryption
- Flexible SIM Allocation and Credit Usage
- Auto Recharge and Promotions Management
- Human Behavior Simulation
- Auto SMS/Call Generation
- Real-time SIM Card Availability Detection
- Anti Call Scanning
- 15M/24H Performance Statistics
- Mass CDR/SMS/USSD Records
- Open Web-Service API and Customized Service

## SIM Cloud Application



## Deploy & Transmission

Redundancy Servers in Cloud  
Commercial Database and High Security  
24 Hours Database Backup  
Independent Customer Domain  
Signal/Media Bandwidth Compression  
Signal/Media Encryption and Decryption  
Support NAT Traversal  
Support Redundant Comm. Connections

## SIM Card Human Behavior

Dynamic Assigned IMEI for SIM Card  
SIM Card Roaming among Different sites  
SIM Card Promotion Management  
Auto SMS/USSD after SIM Card REGISTER-OK  
Auto SMS/USSD after SIM Card CALL-END  
Auto SMS Generation  
Auto Call Generation  
Abnormal ACD Detection  
Anti-Call-Scanning

## Performance Statistics

15Min / 24Hour Performance Statistics  
Graphical Performance Statistics Report  
Performance Statistics based on Domain  
Performance Statistics based on Device  
Performance Statistics based on Port  
Performance Statistics based on SIM Group  
Performance Statistics based on SIM Card  
Mass CDR / SMS / USSD List in SIM Cloud

## SIM Cloud Capacity

### Based on Domain Levels:

TRIAL, VIP-1, VIP-2 and VIP-3  
Maximum 1000 Domains  
Maximum 1000 Devices per Domain  
Maximum 1,000,000 CDR Records per Domain  
Maximum 1,000,000 SMS Records per Domain  
Maximum 3 Months of 15Min Statistics History per Domain  
Maximum 1 Year of 24Hour Statistics History per Domain

## Device Management

Graphical WEB Interface  
Device Automatic Provision  
Multiple Time zones  
Running Status Monitoring  
Enable/Disable/Reset  
Operation  
Alarm/Log Management  
Batch Devices Upgrade  
Remote-Web via NAT Traversal  
Remote-CLI via NAT Traversal

## SIM Card Auto Recharge

Automatic Balance Check via SMS/USSD  
Automatic Balance Check via Left Call-Time  
Auto Recharge based on Balance Check  
SIM Card Recharge via SMS/USSD/CALL  
Manual Recharge  
Paid List Importing  
Multiple Paid Groups  
Recharge Fail Detection and Configurable Retries

## Alarm/Log Management

Device Alarm Reporting  
Configurable Alarm Level  
Configurable Alarm Filter  
Current Alarm List  
History Alarm List  
Alarm Notification via E-Mail  
Alarm Notification via SMS  
Alarm Notification via CALL  
User Operation Log  
Device Running Log

## SIM Card Intelligent Allocation

SIM Card Switchover by working time / by working day  
Multiple SIM Groups  
Multiple Local Time zones of SIM Card  
Different SIM Card Priorities  
Once/All Call Count Conditions  
Once/Day/Month/All Call Time Conditions  
Once/Day/Month/All SMS Conditions  
Once/Day/Month/All USSD Conditions  
SIM Card Work/Idle Time Conditions  
SIM Card Left Balance Condition

## SIM Card Auto Promotion

Automatic Promotion Apply via SMS/USSD  
Automatic Promotion Check via Left Call-Time and Expire-Time  
Multiple Package Conditions In One Promotion

## Open Web-Service API

API Security Authentication  
Device List Polling  
Device Info Polling  
Device Setting  
Port List Polling  
Port Info Polling  
Port Setting  
DWG-SIMBANK Port Binding  
SMS Sending  
Received SMS Polling  
USSD Sending  
Received USSD Polling  
Test Call Sending  
Test Call Result Polling  
CDR List Polling

# SIMBank

Dinstar SIM Bank is a centralized storage device which allowing to store up to 128 SIM cards or any other smart card. Together Dinstar SIM Server and GSM/WCDMA VoIP Gateway, it provides complete wireless VoIP solution for clients based on cloud environment. Moreover, all SIM card information is process and transmits through private protocol ensure that high reliability IP network communication between SIMbank and GSM/WCDMA VoIP Gateway.

## Key Features

- NAT Traversal
- 128 SIM Slots Maximum
- Dynamic Allocation of SIM Cards
- High Reliability Data Transmit Mechanism
- Remote SIM Card, Easy to Replace SIM Card
- Hot Swap of SIM Cards with No Service Interruption
- Remote Management, Easy to Maintain Devices



**SIMBank**

## Specifications

<b>SIM</b>	Capacity	128 SIM Slots Maximum
	Type:	GSM, USIM-UMTS
<b>Interfaces</b>	Local	COM Port with RJ-45 Connector
	Network	10/100 Base-T RJ45
<b>Management</b>	Local	Friendly Web GUI Interface
	Remote	Remote Web Access through SIM Cloud System
<b>Firmware Upgrade</b>	Local	Local Firmware Upgrade through Web Interface
	Remote	Remote Upgrade through Auto Provisioning
<b>Environmental</b>	Work Temperature	0-40 °C
	Storage Temperature	-20-70 °C
	Humidity	10%-90%
	Dimensions	437*260*66.6mm
	Weight	3.8kg
	Power Supply	AC 110~220V,50~60Hz
	Power Consumption	22W

### Shenzhen Dinstar Co.,Ltd.

Floor 18, Building 7A, Vanke Cloud City Phase 1, Xingke 1st Street, Xili Sub-district, Nanshan District, Shenzhen, P.R. China 518000

www.dinstar.com  
sales@dinstar.com



### About Us

Founded in 2011 in Shenzhen, DINSTAR is a leading global provider of IP Unified Communication products including VoIP Gateways, IP PBXs, IP Phones and SBCs, we have been delivering more agile, efficient and affordable communication solutions and unparalleled communication experiences to our customers with our reliable, innovative and future-proof products for years. Through our value-added distributors and resellers worldwide, now DINSTAR serves telecom operators, service providers, system integrators, enterprises, SMBs and OEM partners in over 100 countries.