



Grandstream Networks, Inc.

Internal Network and some External Users – Typical Network Solutions



Table of Contents

TYPICAL NETWORK SOLUTIONS- Internal Network and some External Users.....	3
Scenario.....	3
Options Descriptions.....	4

Table of Figures

Figure 1: Network Deployment Diagram – Internal Network and Some External Users	3
Figure 2: Configure External Network Adapter and Internal Network Adapter - II	3
Figure 3: Service IP Address Config	4
Figure 5: Configure Network Routing Rules	5

Table of Tables

Table 1: Parameters Descriptions	4
Table 2: Configure Network Routing Rules	5



TYPICAL NETWORK SOLUTIONS- Internal Network and some External Users

Scenario

The server is deployed on the internal network. Users could access and use the service via internal network and limit some certain public IP address to be able to access the server. In this case, users have to configure 2 networks (Internal network and external network with NAT), and the routing rules. The server's private network address can be configured via static NAT to allow certain external users to access the server.

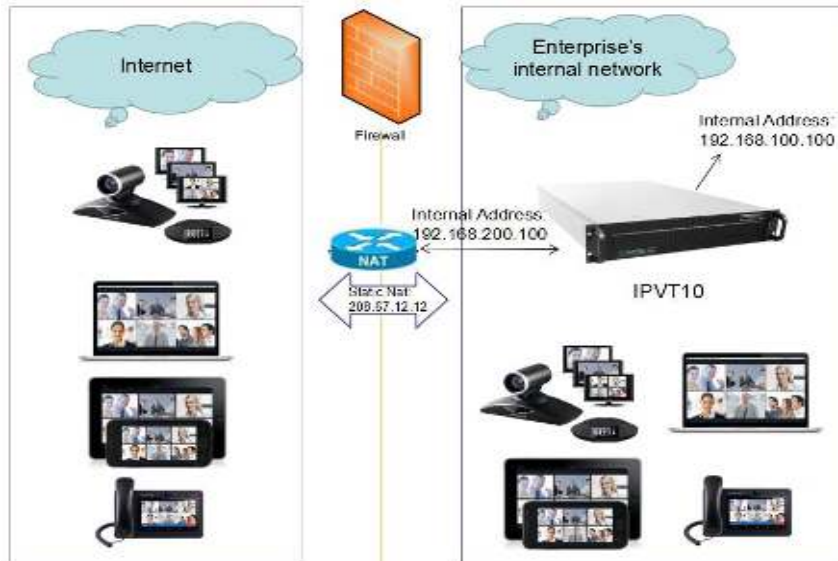


Figure 1: Network Deployment Diagram – Internal Network and Some External Users

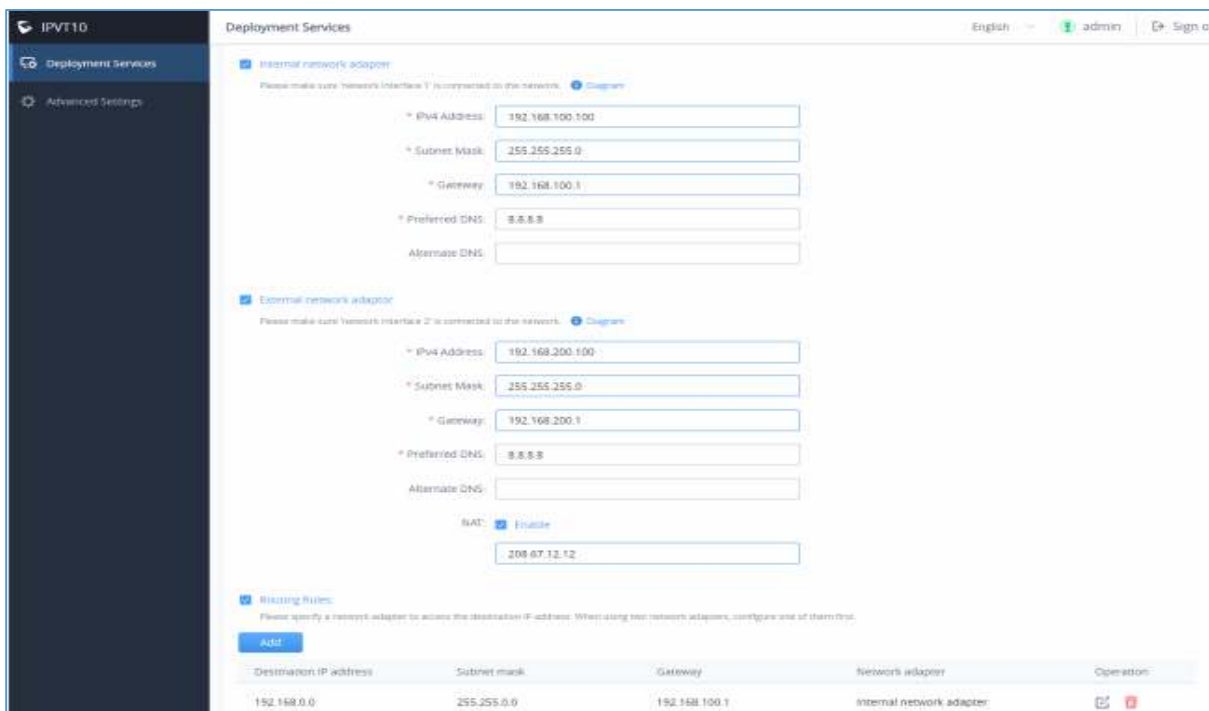


Figure 2: Configure External Network Adapter and Internal Network Adapter - II

Options Descriptions

Table 1: Parameters Descriptions

Parameters	Description
Internal Network Adapter	Configures Internal Network Adapter's parameters.
External Network Adapter	Configures External Network Adapter's parameters.
IPv4 Address	Configures the IP Address for IPVideoTalk Portal.
Subnet Mask	Configures the Subnet Mask.
Gateway	Configures the default Gateway.
Preferred DNS	Set the Preferred DNS.
Alternative DNS	Set the Alternative DNS.
NAT	Enable/Disable NAT, and set the NAT IP address.
Routing Rules	Set the advanced configuration Routing Rules to ensure accessing the destination IP address when using two Network Adapters.

Please, refer to the following steps:

1. Login IPVT10 Web UI.
2. Go to “**Deployment Services**”, and configure “**Service IP Address Config**” options, as the figure shown below:

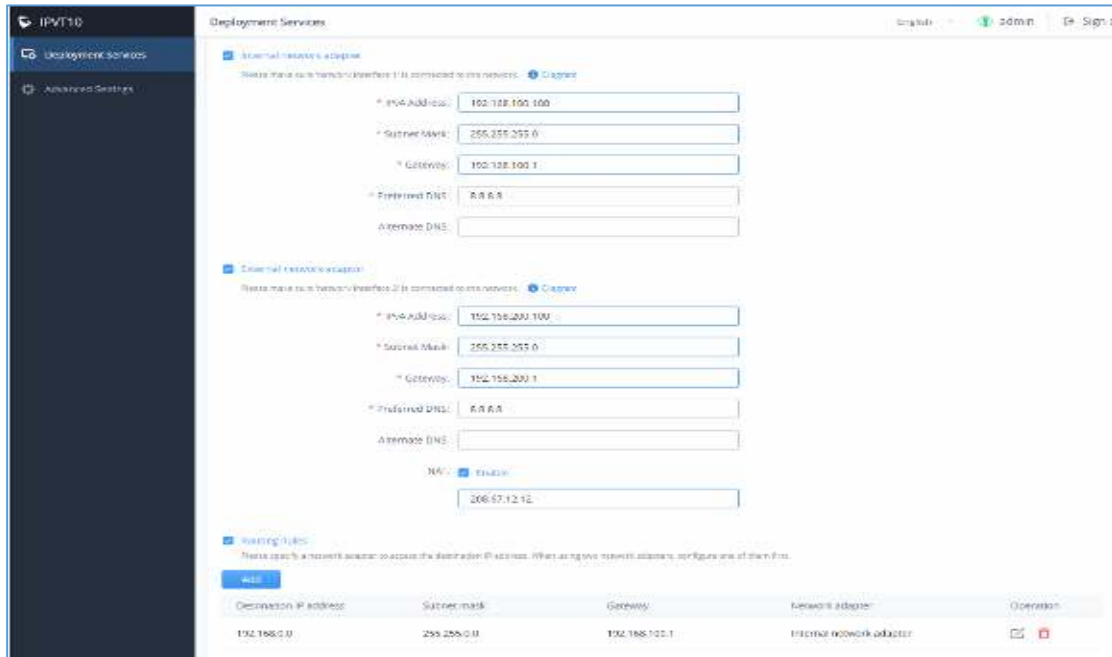


Figure 3: Service IP Address Config

3. According to the actual requirements, users could configure Internal Network Adapter and External Network Adapter.
4. Users need to configure “IPv4 Address”, “Subnet Mask”, “Gateway”, “Preferred DNS”, “Alternative DNS” (optional) for the network adapter.



Note: Please make sure that there should be no conflict in the IP address. Otherwise, the service will be unavailable.

- (Optional) If the selected adapter is external network adapter, users could configure static NAT for the IPVT10.

Note: NAT could translate the private IP address of the internal network into a public IP address, so that an external conference client can access the server of the internal network through the public network.

- When two network adapters are configured, users have to configure the routing rules based on the actual requirements by clicking on **+ Add**. Multiple routing rules can be configured in the IPVT10 server. Users can also edit and delete a certain routing rule.

Note: Routing rules must be specified for the external network and all network segments in the enterprise.

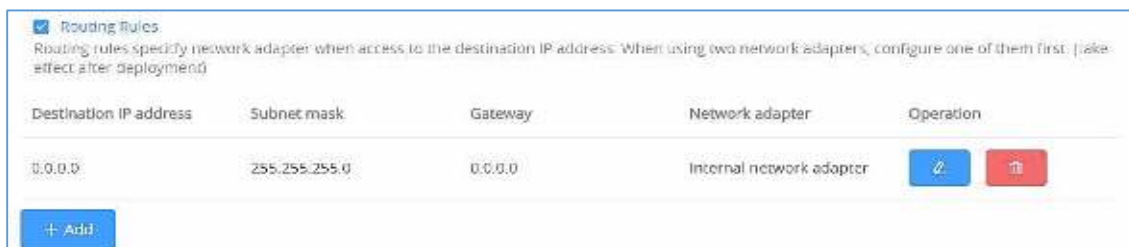


Figure 4: Configure Network Routing Rules

Table 2: Configure Network Routing Rules

Parameters	Description
Destination IP Address	This is used to configure the destination IP address for the network. This option has to be configured with the Subnet Mask option.
Subnet Mask	This is used to configure the subnet mask.
Gateway	This is used to configure the gateway of the destination network.
Network Adapter	This is used to select the server network adapter for destination network.

- Continue to fill in the other configuration options. For the first deployment, users have to fill in all required fields.
- Click on “Deploy to Server Now” to apply the entire configurations of this page to the server. When the deployment is complete, it will take effect immediately.

Note:

- When the deployment is complete, users need to check whether all network interfaces of the server are all connected. For a single network, only one network interface needs to be connected to the network (Internal Network – Network Interface 1, External Network – Network Interface 2).
- If users modify the IP address of the server during the conferences, it may cause the abnormal issues for the ongoing conferences, and the scheduled conferences will be inaccessible.
- When users modify the parameters of the server, the server will restart the service automatically.

