



Grandstream Networks, Inc.

WiFi & LED Scheduling Guide



Table of Contents

INTRODUCTION.....	3
GWN DEPLOYMENT AND CONFIGURATION.....	4
Easy Provisioning for Mass Deployment.....	4
Accessing the Web GUI.....	5
WIFI SCHEDULE.....	6
Overview & Usage.....	6
Configuration Steps.....	6
<i>Default SSID.....</i>	<i>6</i>
LED SCHEDULE.....	9
Overview & Usage.....	9
Configuration Steps.....	9

Table of Figures

Figure 1: GWN76XXs Setup Sample.....	4
Figure 2: GWN7610 Web GUI Login Page.....	5
Figure 3: WiFi Schedule.....	7
Figure 4: WiFi Schedule enabled on SSID.....	8
Figure 5: LED Scheduling Sample.....	10

Table of Tables

Table 1: LEDs.....	9
--------------------	---



INTRODUCTION

Grandstream GWN76xx Access points series support WiFi & LED schedulers which are two features that can help arrange on a flexible way the usage of the device based on customer's need. Hence when it is not needed the wireless signal can be disabled based on a schedule (ex: during out of office hours, weekends ...etc.).

The same goes for the LEDs scheduler feature where you have the choice between permanently disabling (turn off) LEDs of the AP or schedule specific time when they will be turned on. This can be helpful for example when the LED lights are disturbing during some period of times or not needed at all.

LED or WiFi Scheduling configuration can be done from either GWN7000 acting as controller for GWN76xx access points or on Master GWN76xx access points directly. In both cases, the configuration will be reflected on paired access points.

This guide covers basic overview and usage of these features and steps needed to configure and activate the schedule on either GWN76XX access points or GWN7000 router.



GWN DEPLOYMENT AND CONFIGURATION

Easy Provisioning for Mass Deployment

The GWN comes with a built-in controller in order to use it either on a standalone deployment or in mass deployment environment where the configuration can be done either from one GWN76XX acting as a controller for the rest of the APs or you can configure all your AP from the GWN7000 router which then will push the configuration to all the Access points via the LAN connection.

For instance, when we use the WiFi or LED schedule features, then the configuration should be done only from the master Access point or the GWN7000 router and it will be reflected on all the rest of the access points automatically via provisioning process.

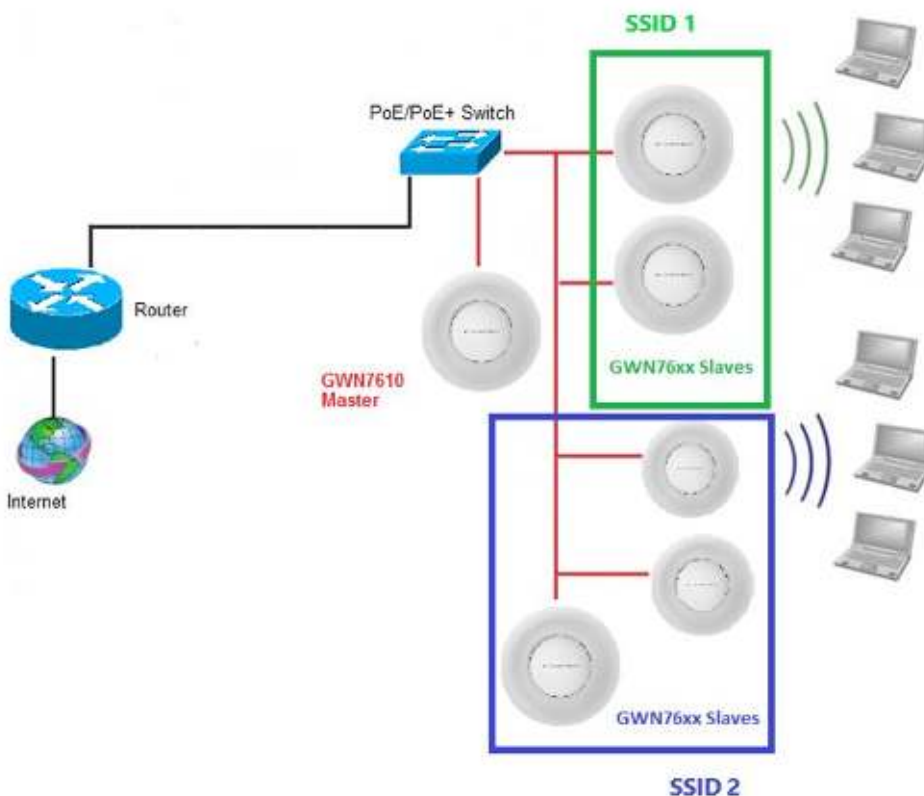


Figure 1: GWN76XXs Setup Sample

For the rest of this guide we assume that you are familiar with Master/Slave configuration and deployment scenario, and for any further details please refer to the following guide:

[GWN76XX master Slave architecture guide](#)



Accessing the Web GUI

The GWN7XXX has embedded Web server which responds to HTTPS GET/POST, this is mainly used to provide an easy and organized web GUI configuration interface for admins & users. Note that **access** to GWN76XX web GUI **is not possible** if it has been **paired** with another GWN76XX AP acting as master or a paired with a GWN7000 router.



Figure 2: GWN7610 Web GUI Login Page

To access the Web GUI:

1. Make sure to use a computer connected to the same local network as the GWN7610.
2. Ensure the device is properly powered up.
3. Open a Web browser on the computer and type in the URL using the IP address which you can get from your DHCP bindings, or use a scanner with the following format: <https://IP Address>
4. Enter the administrator's login and password to access the Web Configuration Menu. The default administrator's username is "admin" and password the default Wi-F Password.

On the next parts we will go through an overview of the WiFi & LED schedule features as well as the configuration/activation steps.

WIFI SCHEDULE

Overview & Usage

The main usage of WiFi scheduler is obviously to schedule the times when the WiFi is ON or OFF, this will give the user a flexible way to control his AP. For example, in most cases the WiFi signal is not needed in out of office hours and instead of turning off the access point, the user can set a schedule based on office hours and the AP will shut down the wireless signal during out of office hours.

Another usage is to have the possibility to schedule the broadcasting of a specific SSID at one interval or time and schedule another SSID to be broadcasted on another interval time, for example: you may want to have free SSID for guest during specific periods of time and turn it off when it is not needed. This is possible with GWN since it allows the scheduling based on SSID.

Configuration Steps

WiFi schedule is based on SSID providing more configuration flexibility. If using default SSID, WiFi schedule can be configured from SSID→WiFi settings.

The configuration can be done from either GWN7000 acting as controller for GWN76xx access points or on Master GWN76xx access points directly. In both cases, the configuration will be reflected on paired access points.

Default SSID

To configure WiFi Schedule for default SSID, follow below steps:

1. Access GWN web interface.
2. Go to “System Settings → Schedule”.
3. Set the days of the week and the time frames to be applied on, as well as the date and time on which this schedule will be taking effect.
 - *Save and apply the settings to activate the feature.*





Schedule

If both weekly and absolute schedules are configured on the same day, only the absolute schedule will take effect.

Name: ScheduleSSID

Weekly

Select All	Sun	Mon	Tues	Wed	Thur	Fri	Sat
00:00-00:30							
00:30-01:00							
01:00-01:30							
01:30-02:00							
02:00-02:30							
02:30-03:00							
03:00-03:30							
03:30-04:00							
04:00-04:30							
04:30-05:00							
05:00-05:30							
05:30-06:00							
06:00-06:30							
06:30-07:00							
07:00-07:30							

Absolute

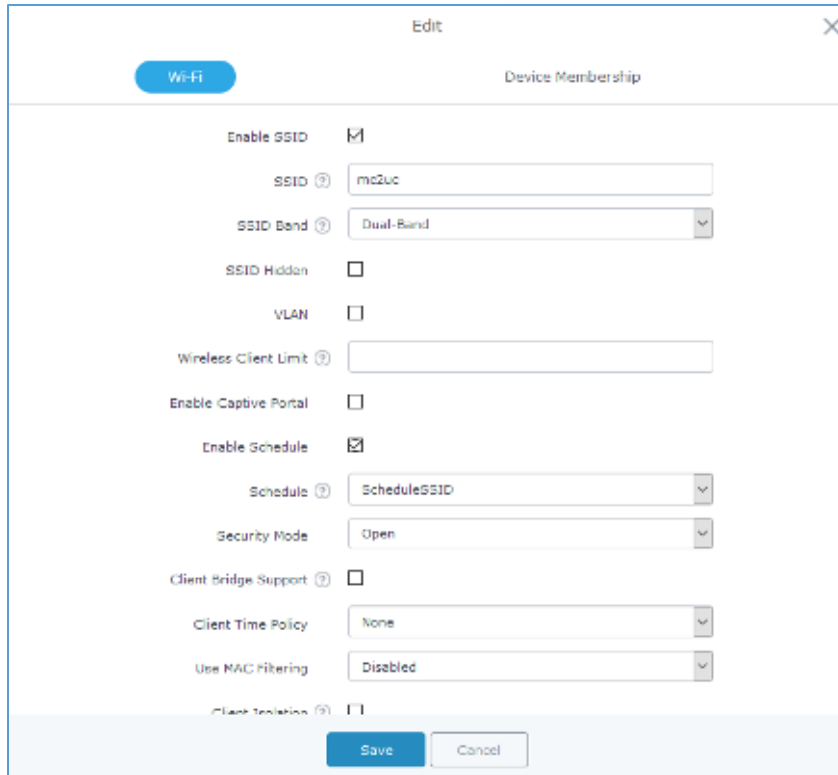
If no time period is selected on the scheduled date, no service on the corresponding date will be executed.

Save Cancel

Figure 3: WiFi Schedule

4. After this access "SSIDs" page → "SSID" → "WiFi"
5. Check option "Enable Schedule" and select the schedule you have created.
 - Save and apply the settings to activate the feature.





The screenshot shows a configuration window titled "Edit" with a close button (X) in the top right corner. Below the title bar, there are two tabs: "WiFi" (selected) and "Device Membership". The main configuration area contains the following settings:

- Enable SSID:
- SSID: mc2uc
- SSID Band: Dual-Band
- SSID Hidden:
- VLAN:
- Wireless Client Limit: (empty field)
- Enable Captive Portal:
- Enable Schedule:
- Schedule: ScheduleSSID
- Security Mode: Open
- Client Bridge Support:
- Client Time Policy: None
- Use MAC Filtering: Disabled
- Client Isolation:

At the bottom of the window, there are "Save" and "Cancel" buttons.

Figure 4: WiFi Schedule enabled on SSID



LED SCHEDULE

Overview & Usage

Besides the WiFi scheduler, GWN76XX Access Points series support also the LED schedule feature. This feature is used to set the timing when the LEDs are ON and when they will go OFF at customer's convenience.

This can be useful for example when the LEDs become disturbing during some periods of the day, and an illustration example would be hotel rooms where the LED lights can be annoying to clients at night but you still don't want to shut down completely the WiFi Access point, this way the LED scheduler feature comes in handy on such scenario where you can set the timing so that the LEDs are off at night after specific hours and maintain the WiFi service for other clients without shutting down the AP.

Configuration Steps

The configuration can be done from either GWN7000 acting as controller for GWN76xx access points or on Master GWN76xx access points directly. In both cases, the configuration will be reflected on paired access points.

To configure LED schedule, follow below steps:

1. Access GWN7000 router acting as controller or Master GWN76xx web interface.
2. Create a new Schedule (System Settings → Schedule)
3. Go to "System Settings -> LEDs".
4. Following options are available:

Table 1: LEDs

Field	Description
LED	Configure whether to always disable/Enable the AP LED dictator or to apply a schedule.
Schedule	Please choose a schedule to assign to LEDs, users can configure schedules under the menu <i>Schedule</i> .

5. Set LED to "Schedule".
 6. Select the schedule you created to be applied for the LEDs.
- *Save and apply the settings to activate the feature.*



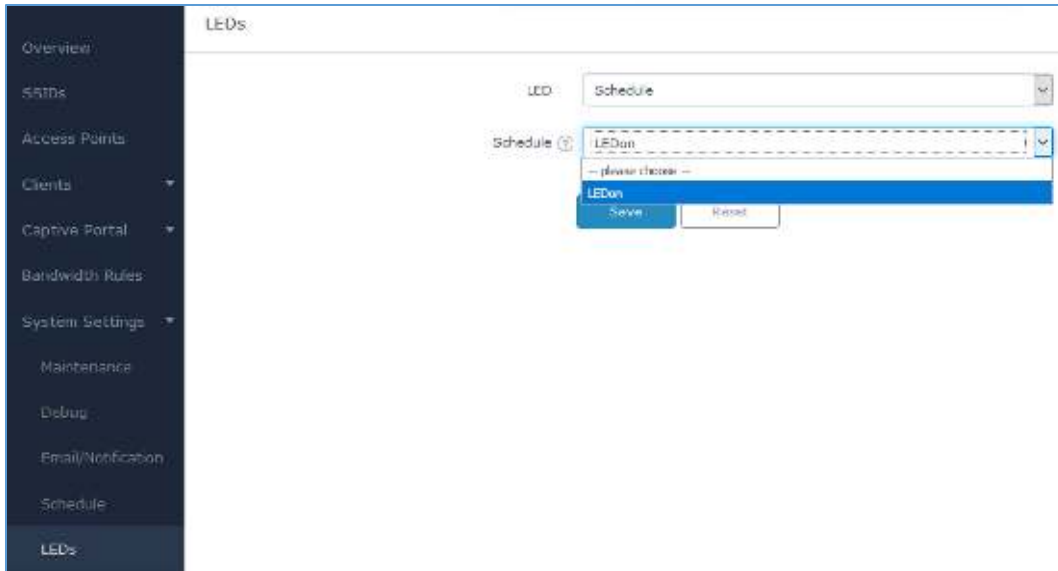


Figure 5: LED Scheduling Sample

